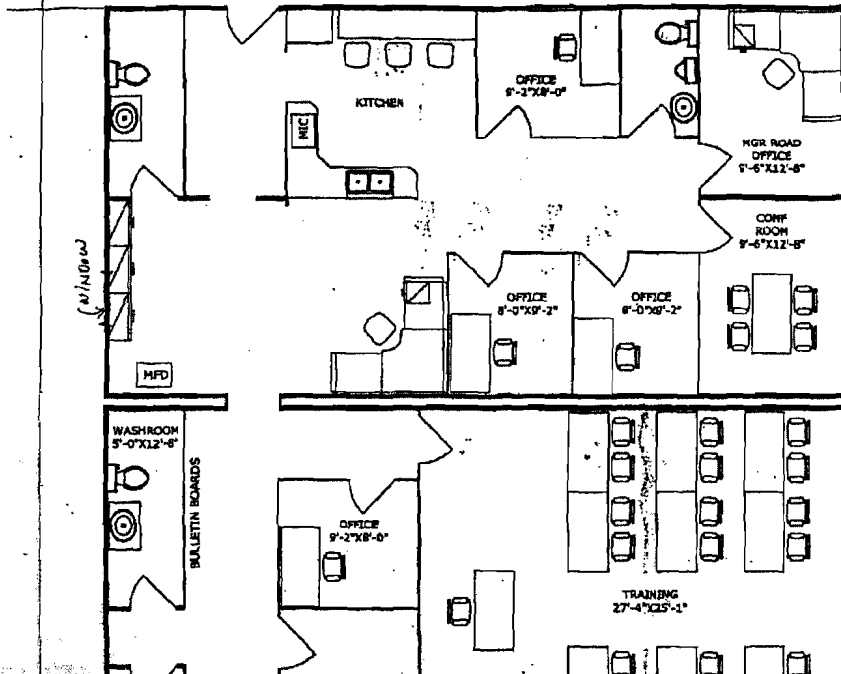


At Board



FEB. 6/69

22-EK.R5.32.44.M1

REFERENCE PLAN OF D.L.'s 2262, 2263,
2264 AND 4485 AND PARTS OF D.L.'s
115 AND 2797 KOOTENAY DISTRICT

BCGS 826.062
"pursuant to Section 100(1)(a)"

SCALE 1:2500

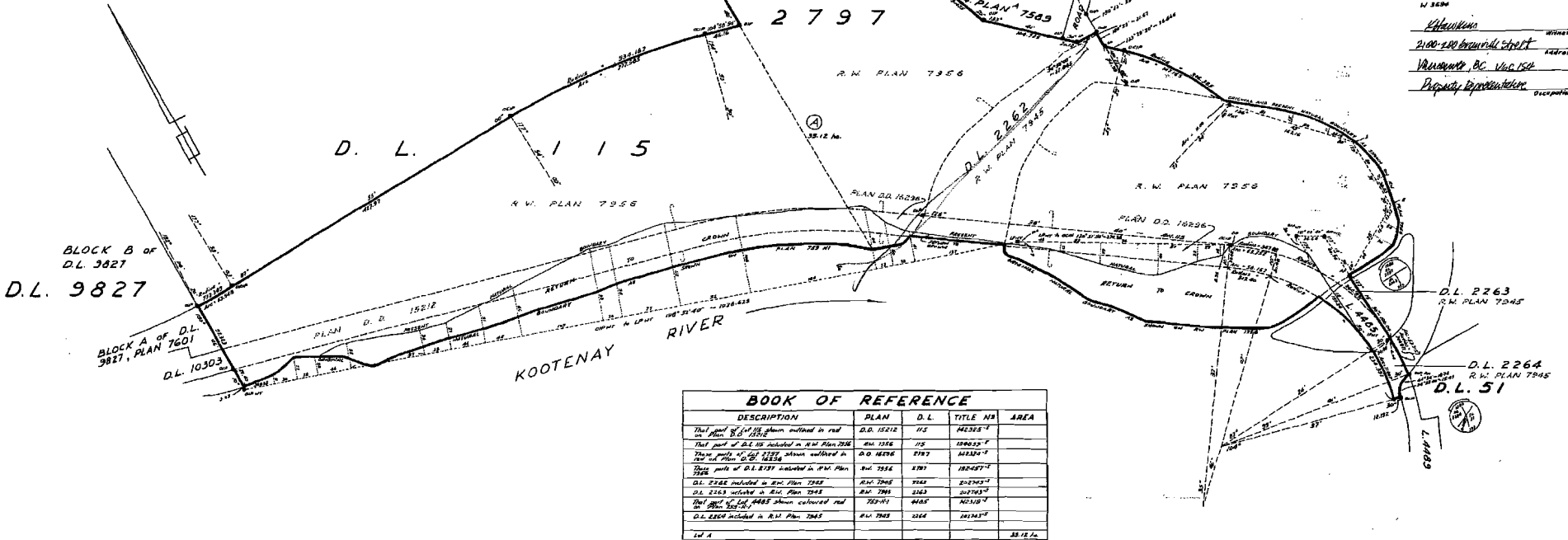
LEGEND

Drawings are Axiometric, derived from
R.W. Plan 7356.
All distances are in metres.
● shown - indicates well surveyed area, found
○ shown - indicates well surveyed, planned
▲ shown - indicates proposed, planned
△ shown - indicates proposed, planned
□ shown - indicates land plan, planned
— shown - indicates reference

PLAN 18789

Deposited in the Land Title Office of Nelson, B. C.,
this 4 day of April, 1940

John C. A. Smith per DT
Registrar
XD8683



BOOK OF REFERENCE				
DESCRIPTION	PLAN	D.L.	TITLE NO.	AREA
That part of D.L. 115 shown outlined in red	D.L. 15212	115	142328-4	
That part of D.L. 115 included in R.W. Plan 7356	R.W. 1256	115	142328-4	
That part of D.L. 115 shown outlined in red	D.L. 18256	115	142328-4	
That part of D.L. 115 included in R.W. Plan 7356	R.W. 7356	115	142328-4	
D.L. 2262 included in R.W. Plan 7356	R.W. 7356	2262	202742-4	
D.L. 2263 included in R.W. Plan 7345	R.W. 7345	2263	202743-4	
That part of D.L. 2264 shown outlined in red	732-01	4485	202743-4	
D.L. 2264 included in R.W. Plan 7345	R.W. 7345	2264	202743-4	
1st 4				38.12 A.

CANADIAN PATENT LIMITED
J. P. Smith
2100-120 Broadway Street
Vancouver, B.C. V6C 1S2
Property Representative

This plan lies within the
East Kootenay Regional District.

SHARPE and ERMAN
S. C. Land Surveyors
Cranbrook, B. C.

L. J. W. Sharpe, a British Columbia Land Surveyor
of Cranbrook, in British Columbia, certify that I was
present at the personally supervised the survey
represented by this plan, and that the survey and
plan are correct. The survey was completed on the
25th day of May, 1938.

L. J. W. Sharpe
S. C. L. S.