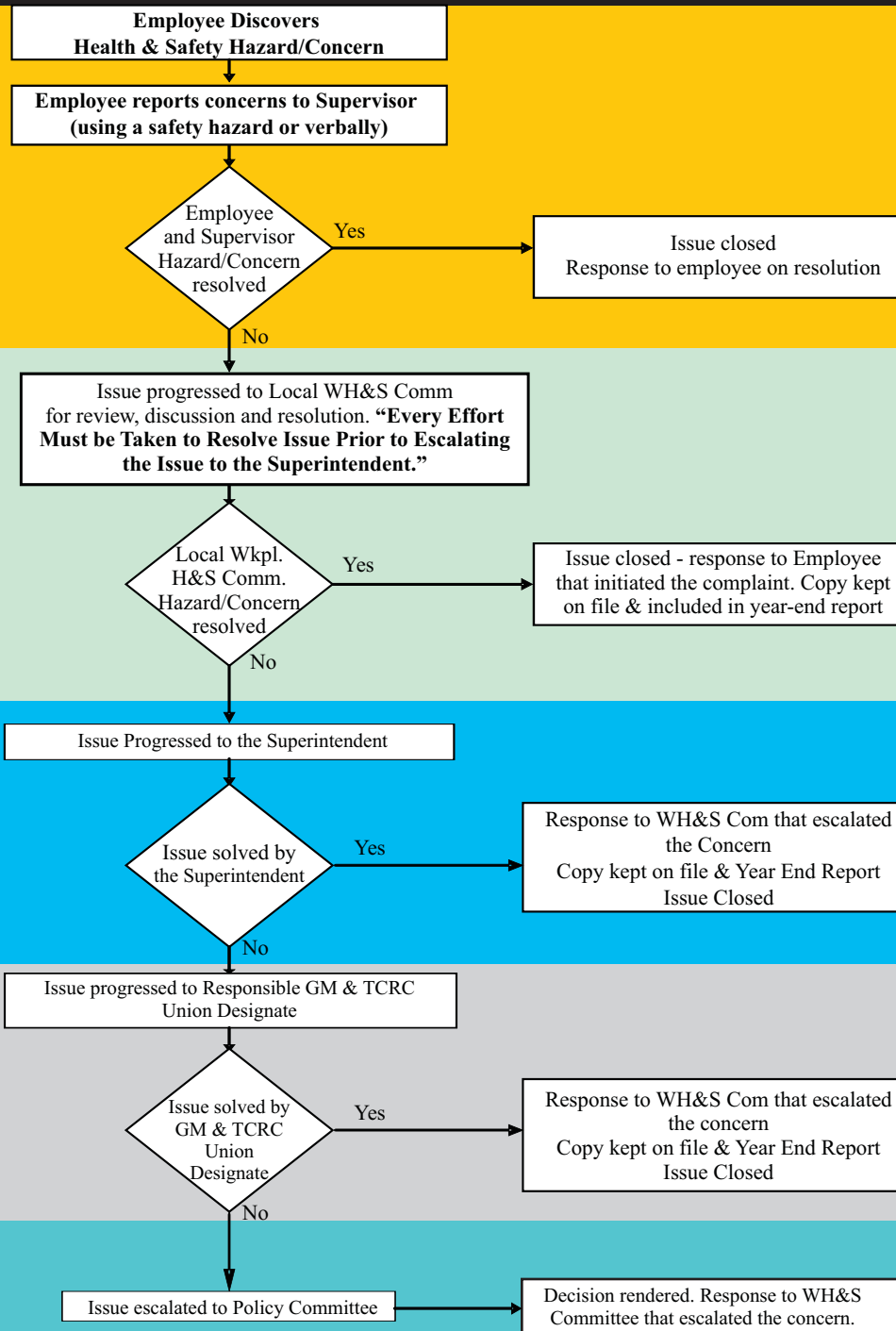


Transportation/Field Operations Health & Safety Committees

HAZARD/CONCERN ESCALATION PROCESS



Local reporting processes will define time periods for reporting, responses, and/or movement to a local workplace committee for recommendation.

30 DAYS

30 days from the time the committee determines that the issue cannot be resolved, the issue should be escalated to the Superintendent in writing.

30 DAYS

The Superintendent has 30 days to resolve issue locally. If issue cannot be resolved, it should be sent to the Responsible GM/TCRC Union Designate.

60 DAYS

Responsible GM and TCRC Union Designate have 60 days to resolve the issue. If the issue can't be resolved, it should be escalated to the Policy Committee.

90 DAYS

Policy Committee.

Escalation to each level must be done in writing and include a risk assessment when proposing changes to current operating practices/rules.

WHSC is responsible to raise the issue to the next level in the escalation process until resolution.

Escalation to the policy committee must be addressed to the co-chairs and/or secretary in writing.